

Hampshire Water Transfer and Water Recycling Project Environmental Statement - Figure 13.19 Zone of Theoretical Visibility - construction with screening – Proposed Development

VOLUME NUMBER: 6

PLANNING INSPECTORATE SCHEME NUMBER: WA010002

APPLICATION DOCUMENT REFERENCE: 6.3

APFP REGULATION: 5(2)(a)

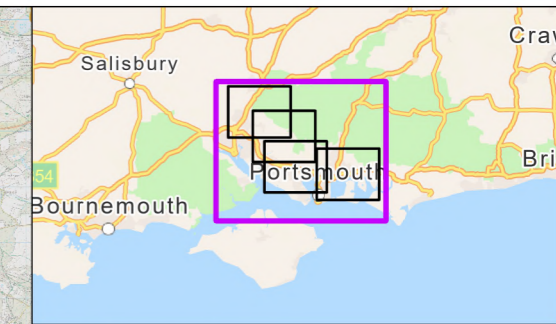
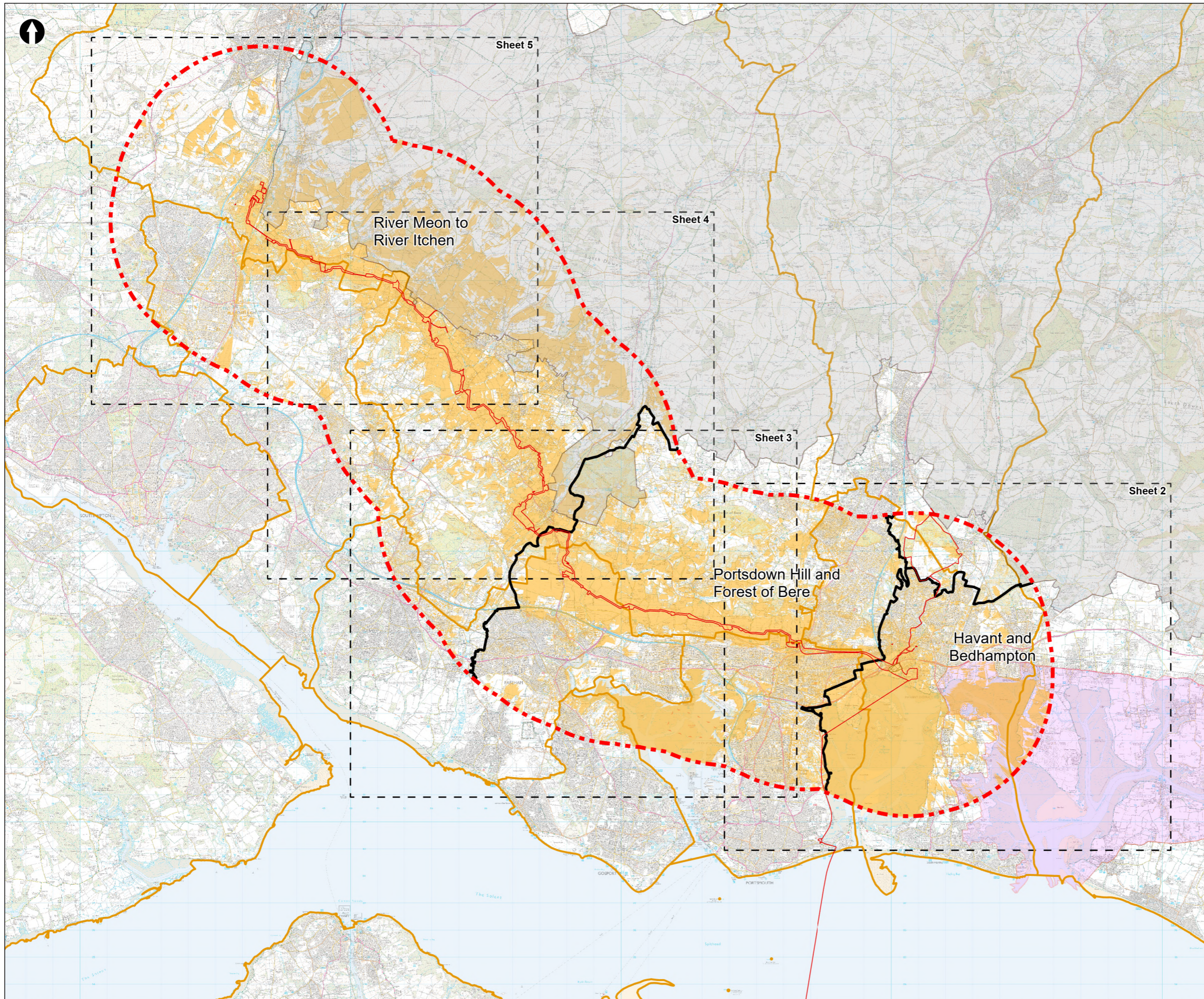
May 2026

Version 0



from
**Southern
Water** 

The Southern Water logo consists of the words 'Southern' and 'Water' stacked vertically in a dark blue, sans-serif font. To the right of the word 'Water' is a graphic element consisting of three stylized, wavy lines in shades of blue, representing water.



- Order Limits
- Visual Study Area (5km)
- Principal sections within the study area
- Sheet extent boxes 1:50k
- Local planning authorities
- Chichester Harbour National Landscape
- South Downs National Park
- Water Recycling Plant Site
- Zone of Theoretical Visibility: Construction with screening

ZTV = Zone of Theoretical Visibility.
DTM = Digital Terrain Model.

ZTV produced with Lidar DSM.
ZTV shows visibility, with screening, of construction works above ground only.
Sectional Site Compounds: 20m height.
Trenchless Crossing Compounds: 40m height.
Tunnel Compounds: 40m height.
Open cut sections of DOL: 10m height.

Coordinate system: British National Grid; Datum: OSGB 1936
Data sources: © Crown copyright and database rights 2026 Ordnance Survey 0100031673. Sources: Esri, TomTom, Garmin, FAO, NOAA, USGS, © OpenStreetMap contributors, and the GIS User Community © Environment Agency copyright and/or database right 2026. All rights reserved.

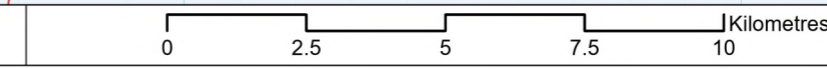
PROJECT TITLE
Hampshire Water Transfer and Water Recycling Project

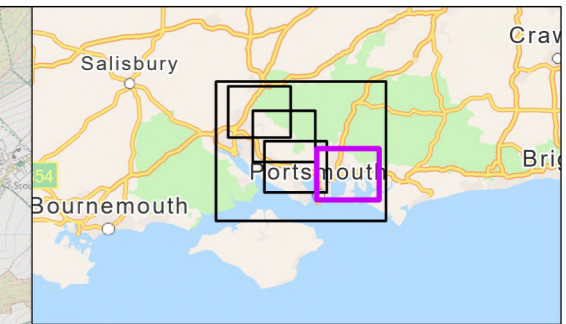
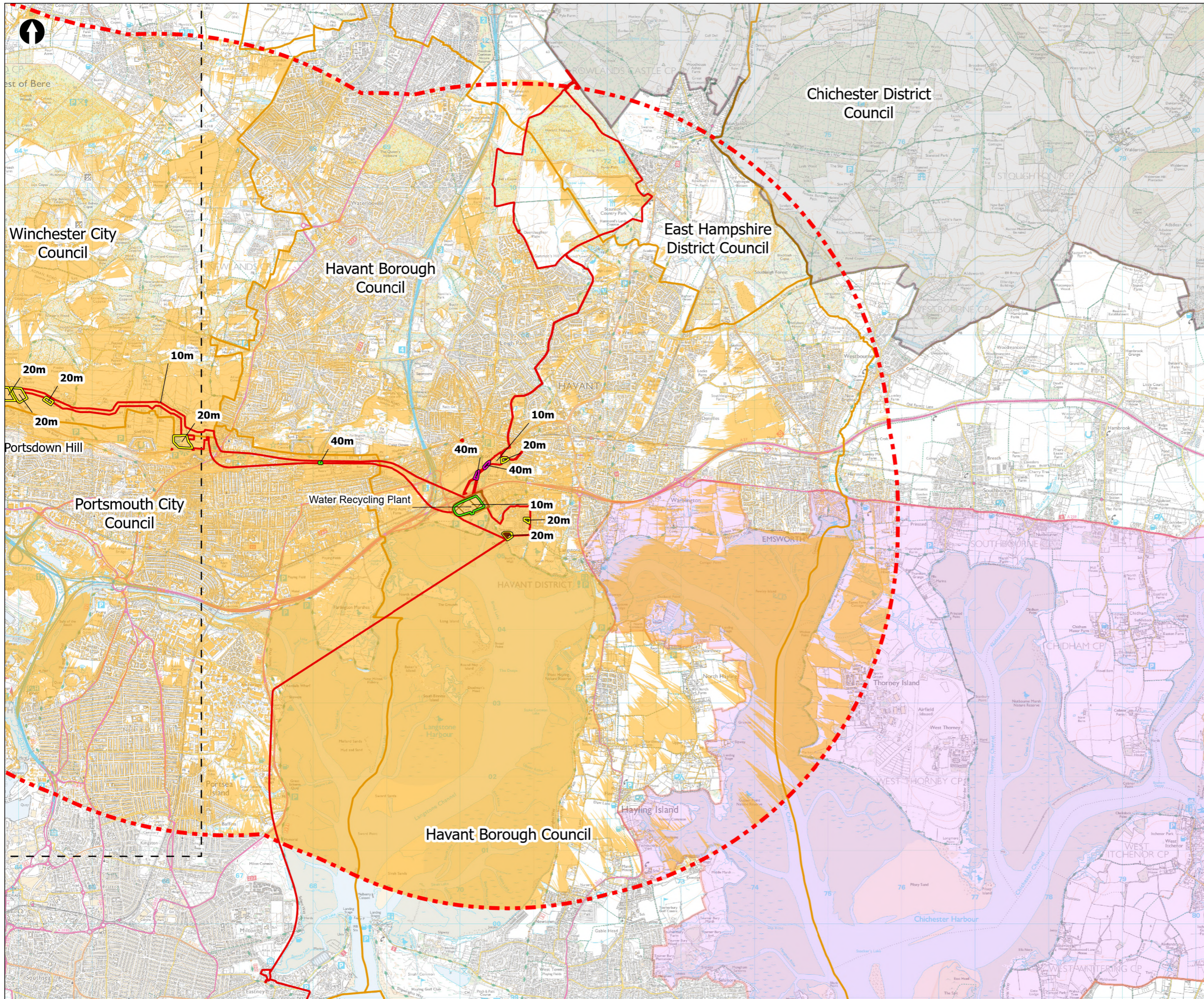


Figure 13.19
Zone of Theoretical Visibility (construction, with screening – Proposed Development)
Sheet 1 of 5

Drawn DL	GIS Checked MW	Checked MP	Approved AK
Scale at A3 1:136,000	Status Final	Revision 05	Security STD

Drawing Number
PC5223-RHD-ES-ZZ-D-Z-0153





- Order Limits
- Visual Study Area (5km)
- Sheet extent boxes 1:50k
- Local planning authorities
- Chichester Harbour National Landscape
- South Downs National Park
- X

 Water Recycling Plant Site
- Limits of Deviation for Budds Farm Pumping Station
- Trenchless Crossing Compound
- Tunnel Compound
- Sectional Compound
- Zone of Theoretical Visibility: Construction with screening

ZTV = Zone of Theoretical Visibility.
DTM = Digital Terrain Model.

ZTV produced with Lidar DSM.
ZTV shows visibility, with screening, of construction works above ground only.
Sectional Site Compounds: 20m height.
Trenchless Crossing Compounds: 40m height.
Tunnel Compounds: 40m height.
Open cut sections of DOL: 10m height.

Coordinate system: British National Grid; Datum: OSGB 1936
Data sources: © Crown copyright and database rights 2026 Ordnance Survey 0100031673. Sources: Esri, TomTom, Garmin, FAO, NOAA, USGS, © OpenStreetMap contributors, and the GIS User Community © Environment Agency copyright and/or database right 2026. All rights reserved.

PROJECT TITLE
Hampshire Water Transfer and Water Recycling Project

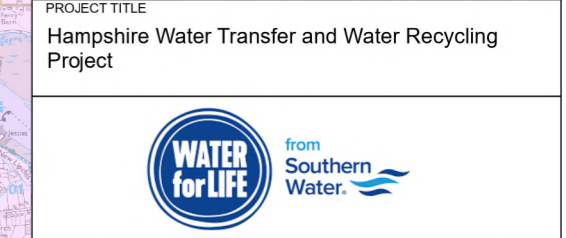
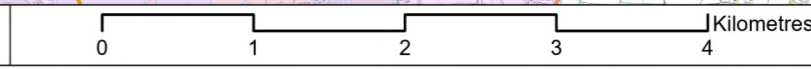
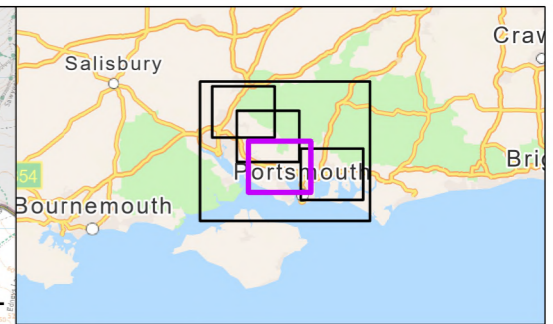
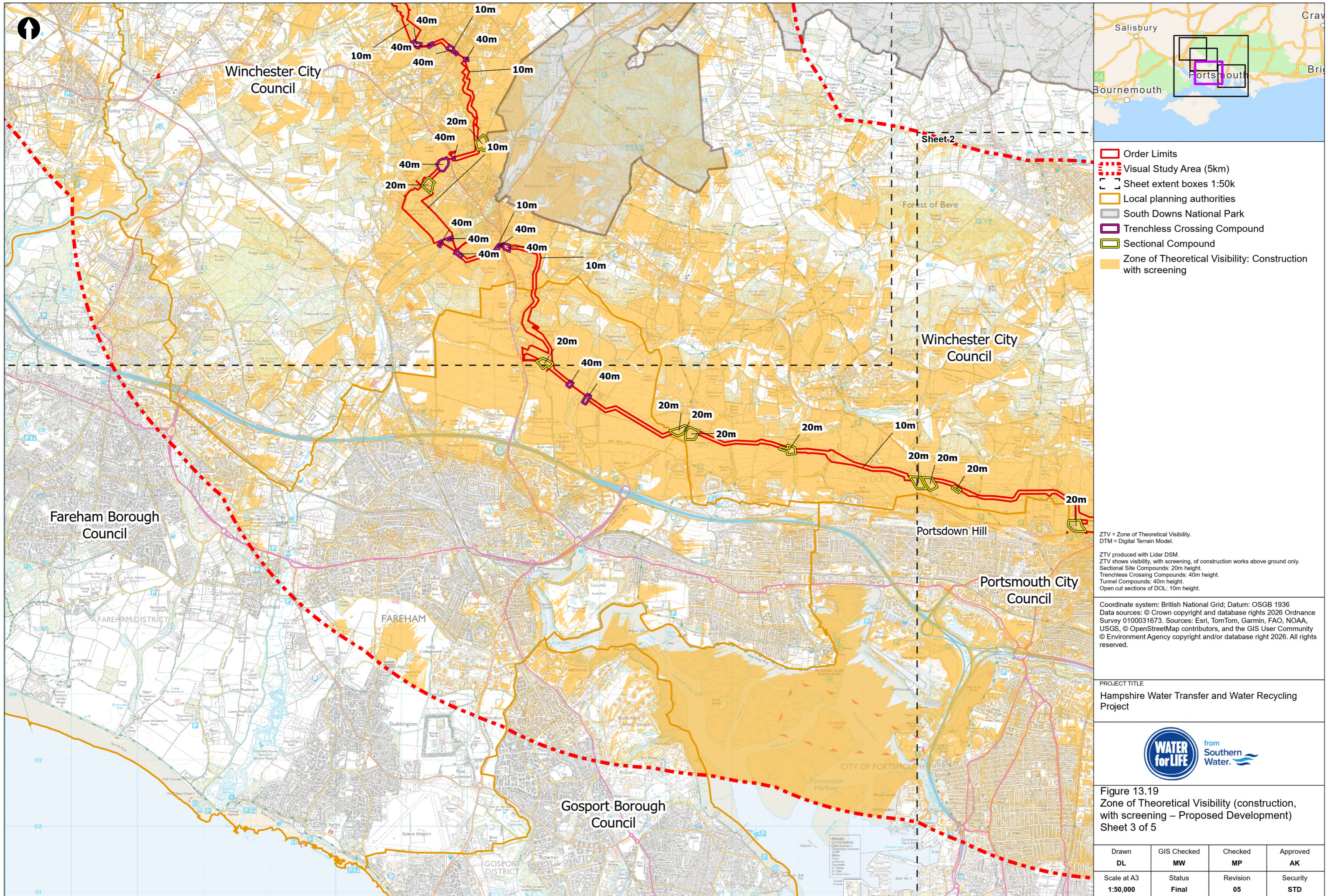


Figure 13.19
Zone of Theoretical Visibility (construction, with screening – Proposed Development)
Sheet 2 of 5

Drawn DL	GIS Checked MW	Checked MP	Approved AK
Scale at A3 1:50,000	Status Final	Revision 05	Security STD

Drawing Number
PC5223-RHD-ES-ZZ-D-Z-0153





- Order Limits
- Visual Study Area (5km)
- Sheet extent boxes 1:50k
- Local planning authorities
- South Downs National Park
- Trenchless Crossing Compound
- Sectional Compound
- Zone of Theoretical Visibility: Construction with screening

ZTV = Zone of Theoretical Visibility.
DTM = Digital Terrain Model.

ZTV produced with Lidar DSM.
ZTV shows visibility, with screening, of construction works above ground only.
Sectional Site Compounds: 20m height.
Trenchless Crossing Compounds: 40m height.
Tunnel Compounds: 40m height.
Open cut sections of DOL: 10m height.

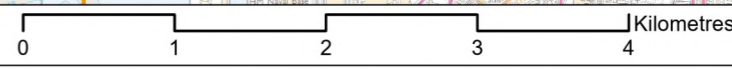
Coordinate system: British National Grid; Datum: OSGB 1936
Data sources: © Crown copyright and database rights 2026 Ordnance Survey 0100031673. Sources: Esri, TomTom, Garmin, FAO, NOAA, USGS, © OpenStreetMap contributors, and the GIS User Community © Environment Agency copyright and/or database right 2026. All rights reserved.

PROJECT TITLE
Hampshire Water Transfer and Water Recycling Project

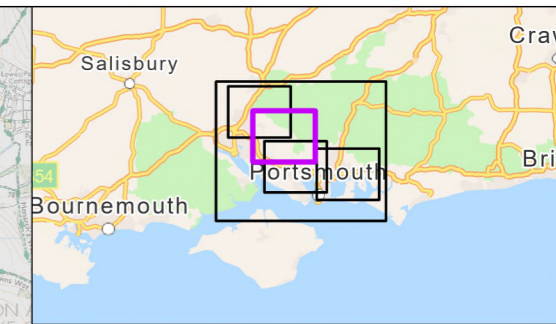
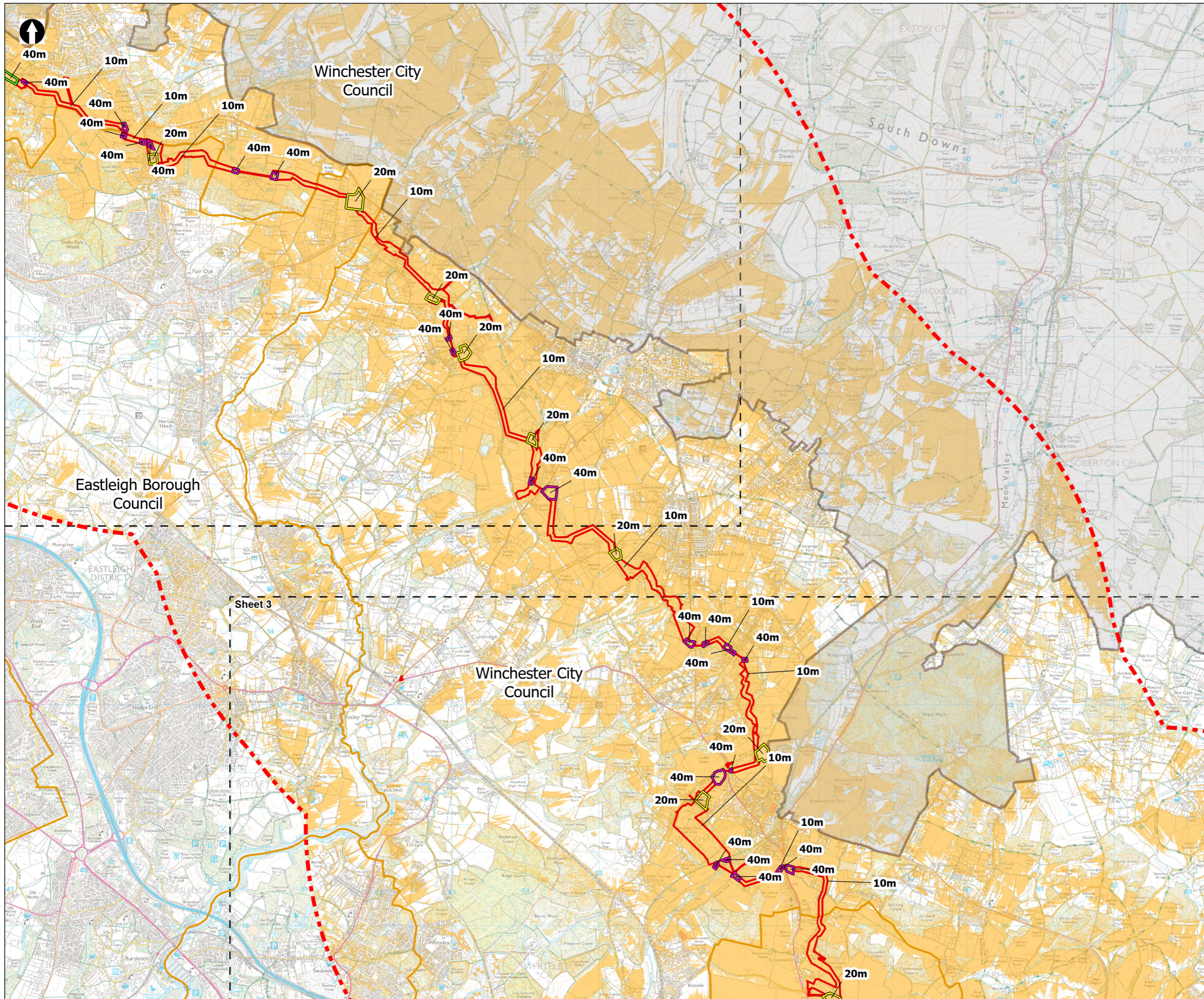


Figure 13.19
Zone of Theoretical Visibility (construction, with screening – Proposed Development)
Sheet 3 of 5

Drawn DL	GIS Checked MW	Checked MP	Approved AK
Scale at A3 1:50,000	Status Final	Revision 05	Security STD



Drawing Number
PC5223-RHD-ES-ZZ-D-Z-0153



- Order Limits
- - - Visual Study Area (5km)
- Sheet extent boxes 1:50k
- Local planning authorities
- South Downs National Park
- Trenchless Crossing Compound
- Tunnel Compound
- Sectional Compound
- Zone of Theoretical Visibility: Construction with screening

ZTV = Zone of Theoretical Visibility.
DTM = Digital Terrain Model.

ZTV produced with Lidar DSM.
ZTV shows visibility, with screening, of construction works above ground only.
Sectional Site Compounds: 20m height.
Trenchless Crossing Compounds: 40m height.
Tunnel Compounds: 40m height.
Open cut sections of DOL: 10m height.

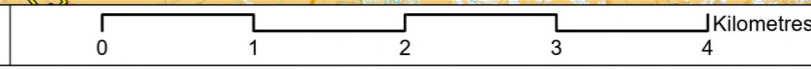
Coordinate system: British National Grid; Datum: OSGB 1936
Data sources: © Crown copyright and database rights 2026 Ordnance Survey 0100031673. Sources: Esri, TomTom, Garmin, FAO, NOAA, USGS, © OpenStreetMap contributors, and the GIS User Community © Environment Agency copyright and/or database right 2026. All rights reserved.

PROJECT TITLE
Hampshire Water Transfer and Water Recycling Project

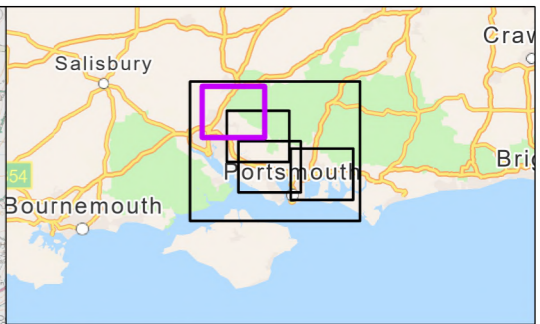
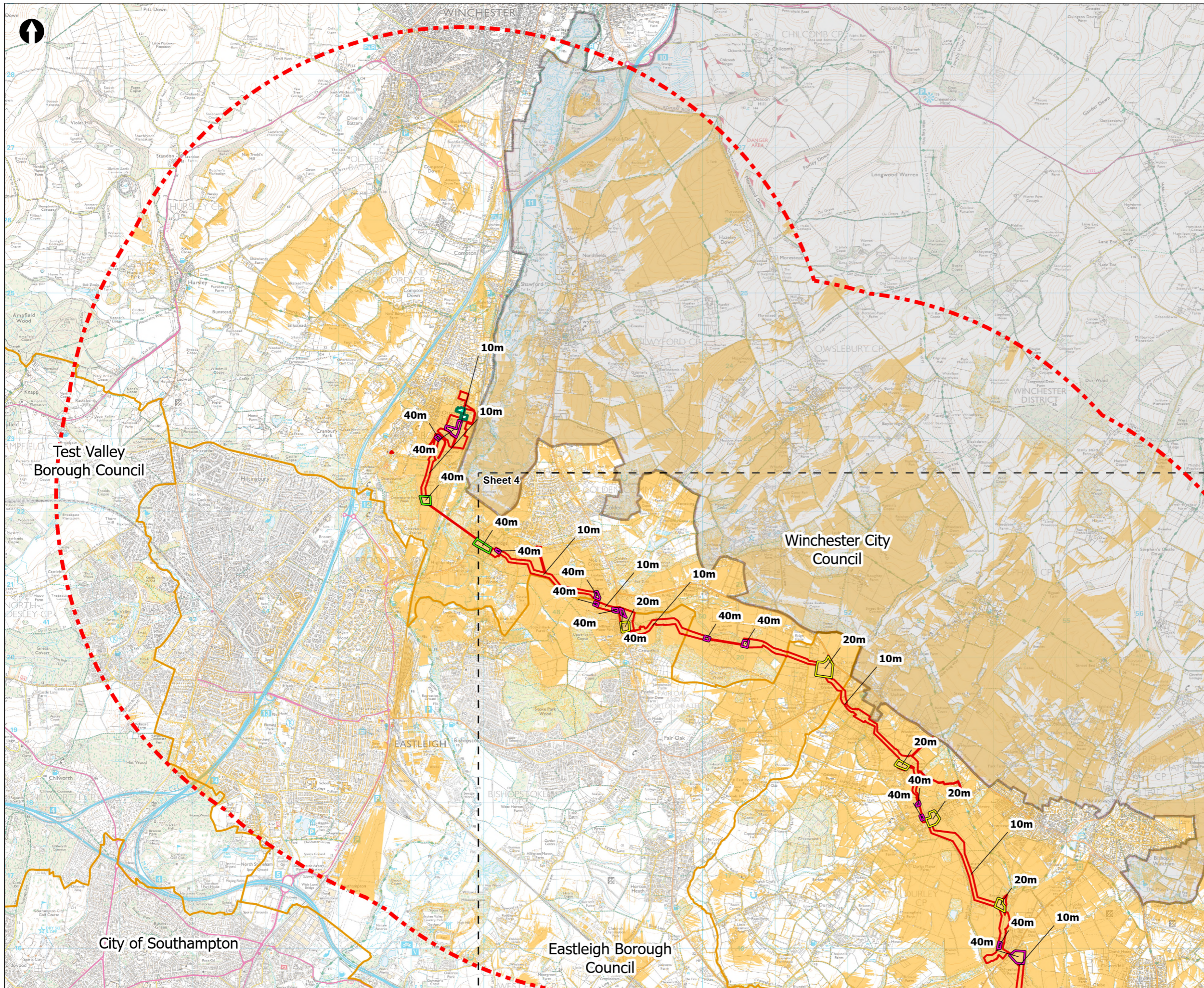


Figure 13.19
Zone of Theoretical Visibility (construction, with screening – Proposed Development)
Sheet 4 of 5

Drawn DL	GIS Checked MW	Checked MP	Approved AK
Scale at A3 1:50,000	Status Final	Revision 05	Security STD



Drawing Number
PC5223-RHD-ES-ZZ-D-Z-0153



- Order Limits
- Visual Study Area (5km)
- Sheet extent boxes 1:50k
- Local planning authorities
- South Downs National Park
- Limits of Deviation for Otterbourne INNS Treatment Plant
- Trenchless Crossing Compound
- Tunnel Compound
- Sectional Compound
- Zone of Theoretical Visibility: Construction with screening

ZTV = Zone of Theoretical Visibility.
DTM = Digital Terrain Model.

ZTV produced with Lidar DSM.
ZTV shows visibility, with screening, of construction works above ground only.
Sectional Site Compounds: 20m height.
Trenchless Crossing Compounds: 40m height.
Tunnel Compounds: 40m height.
Open cut sections of DOL: 10m height.

Coordinate system: British National Grid; Datum: OSGB 1936
Data sources: © Crown copyright and database rights 2026 Ordnance Survey 0100031673. Sources: Esri, TomTom, Garmin, FAO, NOAA, USGS, © OpenStreetMap contributors, and the GIS User Community © Environment Agency copyright and/or database right 2026. All rights reserved.

PROJECT TITLE
Hampshire Water Transfer and Water Recycling Project



Figure 13.19
Zone of Theoretical Visibility (construction, with screening – Proposed Development)
Sheet 5 of 5

Drawn DL	GIS Checked MW	Checked MP	Approved AK
Scale at A3 1:50,000	Status Final	Revision 05	Security STD

